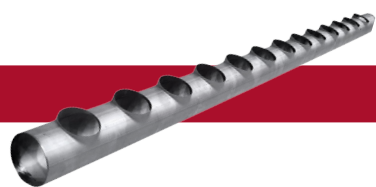


BUTT WELD TEES



T-110

Transportable Collaring machine for both factory and on-site use to make butt welded pipe joints for stainless steel, mild steel, copper, CuNi, brass and aluminium alloys.

- Max. collar size: 114,3 mm
- Max. run tube size: 323,9 mm

TEC-150 HD

Powerful collaring machine for heavy pipes (also SCH 40). You can make collars on tubes with wall thickness up to 12,7 mm.

- Max. collar size: 168,3 mm (219,1 mm / 8")
- Max. run tube size: 508 mm

SEC-100 TBC

Automatic collaring machine for producing manifolds. It includes a feed table with either 1- or 2-axis control.

- Collar sizes: 21,3-114,3 mm
- Run tube sizes: 33,7-219 mm

PLUS-500

Powerful and competitive collaring system for large pipe/vessel production. Collaring can be performed by one operator. Suitable for most malleable materials.

- Collar sizes: 21,3-508 mm
- Run tube sizes: 273 – unlimited

FLANGING



F-Series

The multipurpose Flanging machines are capable of cold and hot forming. Suitable for both long and bent tubes. Grooves can be formed optionally for carbon steel flanges.

- Max. tube diameter: 419 mm
- Wall thickness: up to 9 mm depending on the material and tube diameter

BRAZED LAP JOINT TEES



S-54

Automatic collaring machine for producing single collars for brazed and welded joints. Both straight and bent tubes can be processed. Suitable for copper, aluminium, steel, stainless steel, brass and other malleable materials.

- Collar sizes: 6-54 mm
- Run tube sizes: 8-108 mm

S-54 Feed Tables MFT & AFT

Improves the manifold/collector production efficiency. Adding the Automatic Feed Table (AFT) to S-54 the manifold with multiple collars can be processed automatically. Manual Feed Table (MFT) enables fast pipe positioning for the operator.

S-54 TBC

Tube Branching Center (TBC) for automatic production of manifolds. The movable S-54 unit provides the best use of the floor space.

Power Notcher PND-54

Device with pneumatic power source for cutting and dimpling the branch tube ends for easier brazing. The result is an inspectable brazed joint with the best possible flow characteristics.

- Collar sizes: 12, 14-16, 18, 22, 28, 35, 42 and 54 mm

SPINNING



SP-Series

Tube End Spinning machines are fully automatic and suitable for closing, reducing and expanding of copper and brass tubes. No need for additional end cups.

- Max. tube diameter: 108 mm
- Max. wall thickness: 3 mm

CHIPLESS CUTTING



TCC-50 MCS

Transportable automatic cutting machine with optional cut to length setting adjustment. Tubes are fed manually.

- Tube diameters: 1,5-50,8 mm

TCC-28 Coil

Fully-automatic tube cutting machine with multiple options for chipless cutting. Cutting material can be fed from several kinds of decoiling systems.

- Tube diameters: 4,76-22 mm

TCC-50 RL

Fully-automatic cutting machine for chipless tube cutting from straight lengths. Blank tubes can be cut to several different lengths.

- Tube diameters: 8-50,8 mm.

The trusted T-DRILL Rotary Chipless tube cut-off system provides a highly automated, fast and accurate process. Suitable for cutting to length of small diameter tubes from coils or straight lengths.

All cutting machines are designed for malleable materials such as aluminium, copper, steel and stainless steel.

CHIPLESS CUTTING & ENDFORMING



TCC-EF-Series

Automatic chipless rotary cutting and grooving machine, combined with in-line end forming unit. All these three operations are made simultaneously. For all malleable materials such as aluminium, brass, copper, steel and stainless steel.

- Max. end forming hits: 3 or 8
- Tube diameters: 6-25 mm

PORTABLE SOLUTIONS



T-35 & T-65Cu

Portable, easy-to-use and low-noise tee forming machines for copper tubes. Also a Cordless T-65B 28V Lithium-Ion version available.

- For brazed joint
- Collar sizes: 8-54mm
- Max. run tube size: 108 mm

ND-54

An easy to use tube notching and dimpling tool. It notches the branch tube end to match the inner curve of the run tube. Simultaneously it places two dimples to act as a depth stop and point of inspection.

HFT 2000 Cu

Manually operated unit for use in conjunction with the T-DRILL T-35 or T-65 collaring machines in small volume production of copper and aluminium manifolds. Produce twenty 28 mm collars in less than ten minutes without moving the tube.

- Collar sizes: 8-54 mm
- Run tube sizes: 15-114 mm

T-65 SS

Portable, heavy-duty collaring machine for stainless steel pipes. Cordless T-65B SS 28V Lithium-Ion version (pictured) also available.

- For butt welded joint
- Collar sizes: 17-51 mm
- Max. run tube size: 300 mm

HFT 2000 SS

Manually operated unit, used in conjunction with the T-DRILL T-65 SS collaring machine in small volume production of stainless steel manifolds. Produce five 51mm collars in less than ten minutes without moving the tube.

- Collar sizes: 17-51 mm
- Run tube sizes: 32-114 mm

PLUS 100

Portable pipe collaring system for stainless steel pipes. The Plus 100 is used together with the T-65 SS collaring machine.

- Collar sizes: 54-114,3 mm
- Max. run tube: 300 mm



T-DRILL
PRODUCTIVITY AS A PRODUCT.

T-DRILL
PRODUCTIVITY AS A PRODUCT.

PRODUCTIVITY AS A PRODUCT.

À la Carte

T-DRILL Headquarters with Sales, Service and Assembly

T-DRILL OY
Ampujantie 32
66400 Laihia,
Finland

Tel.+358 6 475 3333
e-mail: sales@t-drill.fi
www.t-drill.fi



T-DRILL Component manufacturing

T-DRILL OY
Tolkintie 23
61500 Isokyrö,
Finland



T-DRILL Inc. Sales and Service (for the USA, Canada, Mexico)

1740 Corporate Drive, Suite
#820, Norcross, Georgia
30093 USA

Tel. +1-770-925-0520,
Toll-free +1-800-554-2730
Telefax +1-770-925-3912
sales@t-drill.com,
www.t-drill.com



T-DRILL is the world-class supplier of tube and pipe fabrication solutions. **T-DRILL** machinery consists of both industrial solutions for several customer segments as well as portable solutions for mechanical contractors and plumbers.

One of **T-DRILL**'s cornerstones is the ability to foresee customers' needs and supply the right machine tools for their purposes. Supplying the right tools means that the special features of the tools meet the customers' special needs – a hand-operated machine tool for smaller purposes or an entire production line as a complete solution for industry.

T-DRILL works closely with its customers to ensure these needs are met in full. The world-class **T-DRILL** technologies, high-quality products, after-sales, customer support and our own product development together with the decades of knowledge and experience are all matters that give competitive advantage to the customer.

The customers are involved in the process and together we build up the best solutions. The customer can rely on us – there's always support available and the customer's productivity is a common interest for us.

In short, the **T-DRILL** family of professionals helps their customers to increase their productivity by offering a long-lasting advantage and edge.

