



Powerful durable wet and dry vacuum cleaner!

SW20 plus

SW20 plus



The versatile universal unit is distinguished by its special flexibility.

A robust high performance unit, the vacuum cleaner and water extraction functions are combined in one appliance.

- Multifunction handle
- Patented float system

Technical data:

Total power max	1100 W / 230 V
Vacuum	210 mbar
Volume dustbag	10 liter
Volume tank	9 liter
Castors	5
Cable length	10 m
Weight	10 kg
Dimensions (l/w/h)	38 x 38 x 59 cm

Completely included:

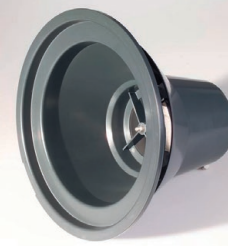
020.567	Suction hose 3 m, with hand tube
021.601	Float insert complete
645.003	Inox tube with clip
645.002A	Inox tube
645.004	Upholstery nozzle
645.006	Rubber crevice tool
645.103	Combi nozzle
646.300	Water suction nozzle, 37 cm
20122519	Dustbag basket with filter complete
-	Dustbag (1 piece)

Special accessories:

020.320	Filter cloth
020.430	Dustbag (10 pieces)
645.005	Dropery brush
645.009	Rubber crevice tool long
645.103	Combi nozzle
646.200	Hard floor nozzle with brush strip, 30 cm
646.300	Water suction nozzle, 37 cm
646.520	Turbo brush with air drive, 28 cm
646.600	Turbo brush with air drive, 16 cm
646.710	Hard floor nozzle with brush strip, 36 cm



5 castors for stability and agility



Filter system with sensational separation



Ergonomic handle and cable strain relief



Robust plug-in suction hose



Switzerland

Cleanfix Reinigungssysteme AG
Stettenstrasse 15 | 9247 Henau-Uzwil/SG
Tel. +41 71 955 47 47 | Fax +41 71 955 47 60
info@cleanfix.com

www.cleanfix.com



Strong and uncompromising
wet vacuum cleaner

SW21 Aqua

SW21 Aqua



High performance and uncompromisingly. The model for professionals who require a heavy duty wet pick up vacuum with long lasting accessories. This SW21 Aqua is also perfect in combination with the use of Cleanfix single disc machines.

Technical data:

Total power	1100 W / 230 V
Vacuum	210 mbar
Volume dustbag	16 l
Volume tank	24 l
Castors	4
Cable length	10 m
Weight	12.7 kg
Measurements l/w/h	42 x 42 x 65 cm

Completely included:

014.567	Set of 2 Inox tubes bent, Ø 38 mm
014.569	Suction hose 4 m, Ø 38 mm
014.600	Float insert complete
646.300	Water suction nozzle, 37 cm

Special accessories:

014.430	Fleece bags (5 pieces)
---------	------------------------



Very robust and durable thanks to chrome steel tube



New filter system with sensational separation even with foamy liquids



User-friendly dismantling and cleaning



Simple mounting and dismantling of suction hose



Large wheels provide maximum manoeuvrability and ease of use

Switzerland

Cleanfix Reinigungssysteme AG
Stettenstrasse 15 | 9247 Henau-Uzwil/SG
Tel. +41 71 955 47 47 | Fax +41 71 955 47 60
info@cleanfix.com

www.cleanfix.com



High-performance wet and dry vacuum cleaner

SW21 Combi

SW21 Combi



Robust and flexible, the perfect model for small to medium areas. For operators who require a high-performance wet and dry vacuum cleaner, with added benefits for easy operation.

Technical data:

Total power	1100 W / 230 V
Vacuum	210 mbar
Volume dustbag	16 l
Volume tank	24 l
Castors	4
Cable length	10 m
Weight	12.7 kg
Measurements l/w/h	42 x 42 x 65 cm

Complete incl.:

014.600	Float insert compl.
020.567	Suction hose 3 m, with hand tube
022.015A	Telescope vacuuming tube inox
645.004	Upholstery nozzle
645.006	Rubber crevice tool
645.103	Combi nozzle
646.100	Water suction nozzle, 30 cm
646.200	Hard floor nozzle with brush strip, 30 cm
20122519	Dustbag basket with filter complete
-	Fleece bag (1 piece) (16,5 l)

Special accessories:

014.430	Fleece bags (5 pieces)
020.320	Filter cloth
020.430	Dustbag (10 pieces)
645.005	Dropery brush
645.009	Rubber crevice tool long
645.103	Combi nozzle
646.200	Hard floor nozzle with brush strip, 30 cm
646.300	Water suction nozzle, 37 cm
646.520	Turbo brush with air drive, 28 cm
646.600	Turbo brush with air drive, 16 cm
646.710	Hard floor nozzle with brush strip, 36 cm
687011290	Paper filter (10 pieces)

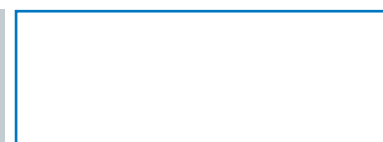
Switzerland

Cleanfix Reinigungssysteme AG
Stettenstrasse 15
9247 Henau-Uzwil/SG
Tel. +41 71 955 47 47
Fax +41 71 955 47 60
info@cleanfix.com

www.cleanfix.com



Large wheels provide maximum manoeuvrability and ease of use



New filter system with sensational separation even with foamy liquids



User-friendly dismounting and cleaning



Simple mounting and dismounting of suction hose





Highly absorbent wet and dry
vacuum cleaner

SW25 K

SW25 K



With its high suction capacity the SW25 K copes professionally and reliably with industrial surfaces. The tipping frame simplifies emptying of the dirty water and transport up and down steps.

- Inox vessel
- Tip-mechanism to empty the water
- Patented float system

Technical data:

Total power	1100 W / 230 V
Vacuum	210 mbar
Volume tank	20 l
Cable length	10 m
Weight	19.2 kg
Measurements l/w/h	60 x 40 x 84 cm

Completely included:

020.567	Suction hose 3 m, with hand tube
021.601	Float insert complete
645.002A	Inox tube (2 pieces needed)
645.004	Upholstery nozzle
645.005	Dropery brush
645.006	Rubber crevice tool
645.103	Combi nozzle
646.300	Water suction nozzle, 37 cm
20122519	Dustbag basket with filter complete
2012428	Dustbag basket complete

Special accessories:

020.320	Filter cloth
020.430	Dustbag (10 pieces)
026.950	Nylon dustbag for wet vacuuming
645.009	Rubber crevice tool long
646.200	Hard floor nozzle with brush strip, 30 cm
646.710	Hard floor nozzle with brush strip, 36 cm
2012225	Large area filter
2012250	Water suction nozzle with fixed bracket, Ø 38 mm
687011290	Paper filter (10 pieces)
687011656	Material basket



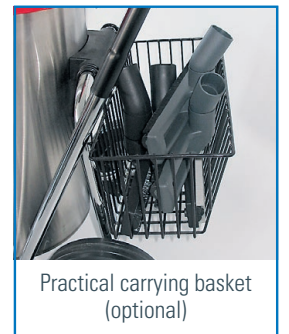
Polyester filter improve filtration



Resistant stainless container



Attachable water suction nozzle (optional)



Practical carrying basket (optional)



Switzerland

Cleanfix Reinigungssysteme AG
Stettenstrasse 15 | 9247 Henau-Uzwil/SG
Tel. +41 71 955 47 47 | Fax +41 71 955 47 60
info@cleanfix.com

www.cleanfix.com