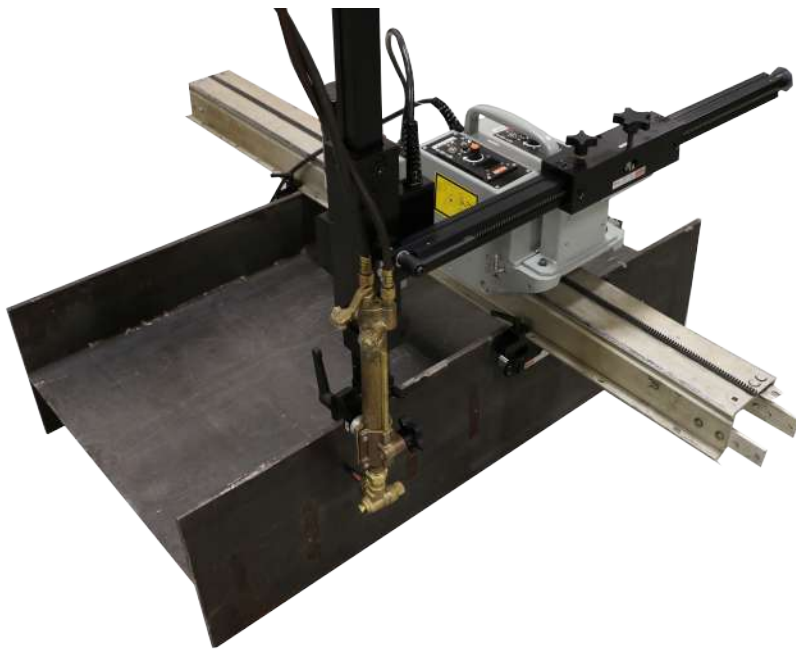




H BEAM CUTTING SYSTEM



The H Beam Cutting System combines the versatile KAT® automation carriage with a motorized torch to provide precision and speed to the cutting of beams.

The carriage is mounted on a track which can be unlocked and adjusted to allow for angled cuts.

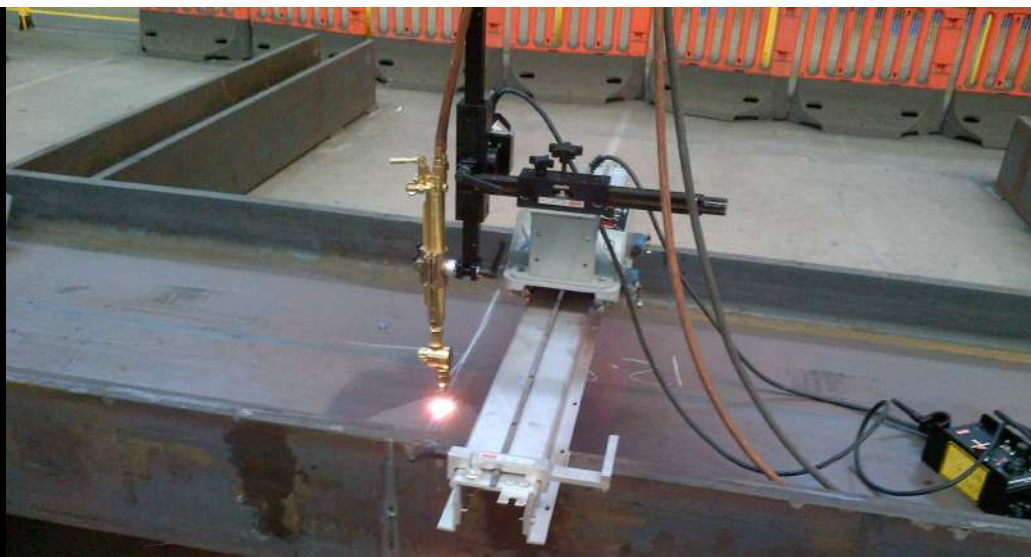
By automating the vertical and horizontal cuts of the beam, increased productivity and cost savings can be achieved while reducing material handling and improving cut quality.

Cut beams with precision and speed

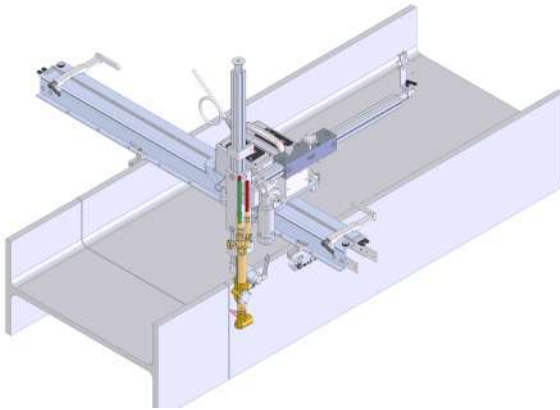
HINGED TRACK MOUNTING DEVICE ALLOWS FOR LINEAR AND ANGLED CUTS



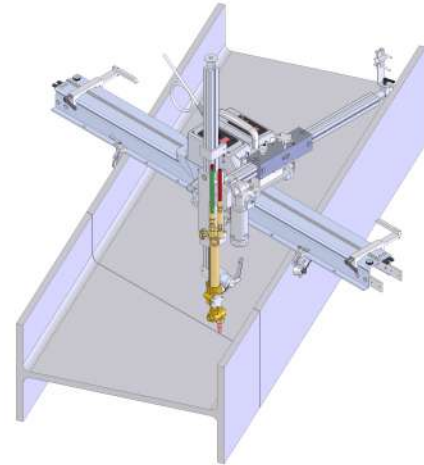
WELDING AND CUTTING



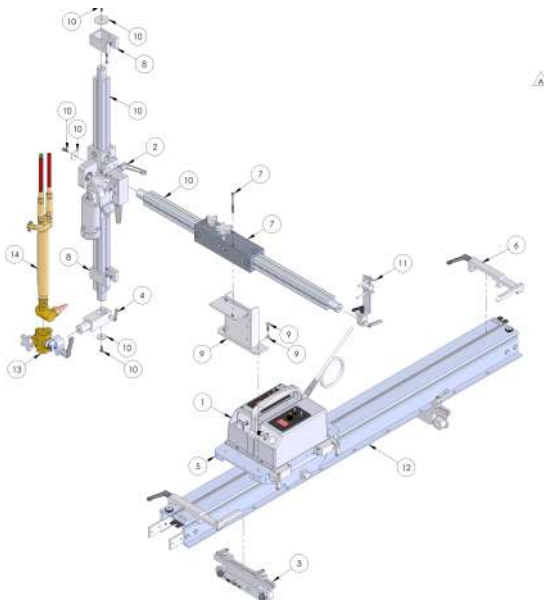
STRAIGHT CUT SETUP



ANGLED CUT SETUP



The H Beam system is designed with a track mounting device which uses on/off magnets on a swivel hinge to provide both linear and angular cuts. The mounting device is unlocked which allows the track to swivel on its axis. This is ideal for applications which also require cuts to be made on a 45° angle for butting two beams together.



Item	Part No.	Description	Qty
1	GS-570-006	KAT UPPER HOUSING	1
2	GS-570-003	RACK BOX ASSEMBLY	1
3	GS-570-001	TRACK MOUNTING DEVICE	2
4	GK-201-109	EXTENDED SWIVEL CLAMP	1
5	GK-191-P-200-2B	LOWER HOUSING ASSEMBLY	1
6	GK-191-P-061	LIMIT SWITCH ACTUATOR	2
7	GK-190-650	RACK BOX ASSEMBLY	1
8	GK-190-238	LIMIT SWITCH ACTUATOR	2
9	GK-190-066	RISER ASSEMBLY	1
10	GK-190-047-4	RACK ARM	2
11	GK-181-038	PIVOTING CABLE CLAMP	1
12	GK-166-258	5' TRACK ASSEMBLY	1
13	GK-165-068	CUTTING TORCH HOLDER	1
14	-	TORCH (NOT INCLUDED)	-

KAT, KBM, MOGGY, KATBAK & SAM are registered trademarks of Gullco Enterprises Limited

Distributed by:

SPECIFICATIONS ARE SUBJECT TO CHANGE WITHOUT NOTICE

GULLCO.COM

HBEAM2204

GULLCO		
CANADA - GULLCO INTERNATIONAL LIMITED		
Phone: 1-905-953-4140	Fax: 1-905-953-4138	e-mail: sales@gullco.com
U.S.A - GULLCO INTERNATIONAL INC.		
Phone: 1-440-439-8333	Fax: 1-234 808-4146	e-mail: ussales@gullco.com
EUROPE - GULLCO INTERNATIONAL (U.K.) LIMITED		
Phone: +44 1257-253579	Fax: +44 1257-254629	e-mail: uksales@gullco.com
AUSTRALIA - GULLCO INTERNATIONAL PTY LIMITED		
Phone: 61 (0)7 3348 5515	Fax: 61 (0)7 3348 5510	e-mail: ausales@gullco.com
INDIA - GULLCO INTERNATIONAL INDIA PVT LIMITED		
Phone: +91-20-2551-1433	Fax: +91-20-2551-1433	e-mail: indsales@gullco.com
CHINA - GULLCO INTERNATIONAL SHANGHAI LIMITED		
Phone: +8621-50460341	Fax: +8621-50463554	e-mail: c.zhang@gullco.com
SINGAPORE - GULLCO INTERNATIONAL LIMITED		
Phone: +65-9385-4468		e-mail: benny.iim@gullco.com
LATIN AMERICA - GULLCO INTERNATIONAL LIMITED		
Phone: 55-11-99485-1336		e-mail: rogerio.macedo@gullco.com
GERMANY - ms gmbh Melchior Schweißtechnik		
Phone: +49(0)173 5437722	Fax: +49(0)208 999 38-38	e-mail: christian.mertens@ms-gmbh.com