



SANTIOLI SRL

COMPANY PROFILE



INNOVATION, COMPETENCE AND RELIABILITY
SHEETS AND COILS METAL SURFACE FINISHING MACHINES



SANTIOLI SRL

LA RINASCITA DELL'ACCIAIO LAVORATO





SANTIOLI SRL is a company designing, manufacturing and assisting surface finishing lines for **stainless steel, aluminum, copper and zinc** in SHEET METAL and COILS. Based in Italy we operate all over the world. Since our beginnings, the company is empowered with 20 years of experience in the machine development for leading companies in the field.

SANTIOLI GRINDING AND POLISHING LINES are all custommade, through a very accurate technical co-design, in order to offer to the

customer every measure of working at high speeds, with the highest level of quality.

The care of customer relations, the support and assistance in all phases of the interaction and the quality of intervention are fundamental points of the company vision. Our mission is to be effective to our customer in improving their production.



INNOVATION



**FULL
AUTOMATION**



**ABSOLUTE
OPERATOR SAFETY**



**CERTIFICATION
FOR INDUSTRY 4.0**



**CUSTOMER
CARE**



**TECHNOLOGY AND
DESIGN MADE IN ITALY**



SELF-LEARNING



**1st, 2nd AND 3rd LEVEL
CONNECTIVITY SYSTEMS**

SANTIOLI Grinding and polishing Lines

SHEET-TO-SHEET LINE

- Stainless steel
thickness from 0,6 mm to 45 mm;
width from 500 mm to 2.000 mm;
length from 700 mm to 12.000 mm.

- Aluminum
thickness from 1 mm to 500 mm
width from 500 mm to 2.000 mm;
length from 700 mm to 12.000 mm.



SANTIOLI

Grinding and polishing Lines

COIL-TO-COIL LINE

- Stainless steel
thickness from 0,5 mm to 5 mm;
width up to 2.000 mm.

- Aluminum
thickness from 0,5 mm to 5 mm;
width up to 2.000 mm.





Thickness	Stainless steel: 1-45 mm; aluminum: 1-500 mm	Stainless steel: 0,6-6 mm; aluminum: 1-20 mm	Stainless steel: 0,6-4 mm; aluminum: 1-10 mm
Width	600-2200 mm	600-2000 mm	600-2000 mm
Grinding engines	90-120 kW	55-90 kW	22-55 kW
Brushing engines	30-55 kW	35 kW	22 kW
Engine attachment system	Direct	Direct	Belt
Contact roller, diameter	320 mm	320 mm	240 mm
Brush roller, diameter	400 mm	400 mm	360 mm
Automatic brush change	2 min	2 min	2 min
Automatic belt change	2 min	2 min	2 min
Sheet metal line speed	5-35 m/min	5-35 m/min	5-35 m/min
Coils line speed	5-100 m/min	5-100 m/min	5-80 m/min
Brush roll speed	20 m/sec	20 m/sec	20 m/sec
Belt roll speed	35 m/sec	35 m/sec	35 m/sec
Operator touch screen	22"	22"	17"
Head edge touch screen	10"	10"	Not presented
Brush grinder	Diamond automatic	Diamond automatic	Semi-automatic
SELF-LEARNING program	Presented	Presented	Presented

SANTIOLI

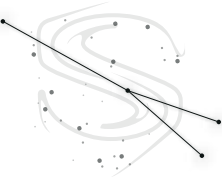
The Santioli series



PHOENIX

The PHOENIX series are processing lines designed for working with materials of important weight, meaning large thicknesses, in order to guarantee a high level of quality. The Phoenix lines are the strongest lines on the market, designed to face any type of heavy machining. It can be defined as a hot grinding line.

There is also the version of the wet line combined with a special filter for washing waste powders. The line includes the washing unit for the sheet metal coming out of the last head and an oven for drying after washing.



SAGITTA

The SAGITTA series are production lines designed for fast processing (4 sheets per minute) often of light materials, allowing impeccable quality while respecting high processing rates and the production cycle. Automatic loading/unloading systems with a table that adapts to the line height in order to speed up the working process.



CERBERUS

CERBERUS lines is a series of compact dimensions line designed for limited spaces while maintaining high performance; as well power reduction with excellent finishing quality. It is ideal for working with light materials and respecting low energy consumption.

SANTIOLI

Automation: sheet metal loading and unloading systems

The automation system for sheet metal has been designed for highspeed finishing and materials of heavy weights.

** The automation system can be also connected to existing lines simply by removing the old system and installing the new one.*

- **Minimum operator intervention, high processing speed** - automated, for loading and unloading (4 sheets/min).
- **Reduction of air consumption** thanks to the new automatic vacuum suction cup system.
- **Reduction in the need for workspaces** thanks to the possibility of loading and unloading the pallets, using a forklift and/or overhead crane.
- **Greater safety during loading** - by a new automatic vacuum suction cup system with self-regulation.
- **Time reduction for the loading and unloading phase** - automatic vertical position of the table to maintain the same height of the roller pass-line (estimated saving 4 sec/sheet).



SANTIOLI Laminator



ALTAIR

The **ALTAIR laminator** with use of the laser cut reaches the cut "0" without wasting any material and having stoppages in the process.

** The new laminator can be installed to the existing line, by removing the old system and replacing it with the new one.*

- No need to stop the machine for the blades replacement;
- No damage to steel and aluminium material, by blade friction;
- Energy consumption reduction;
- Adjustable cutting speed;
- Totally uniform cut.



Laminator

SANTIOLI
References

References

lampre



outokumpu



aperam

OOIKI



RA
RAVANI ACCIAI



SANTIOLI

Innovative Warrantee



**10 year warranty
with maintenance
contract**



**Direct contact with the
assistance department,
guaranteed response
within 48 hours**



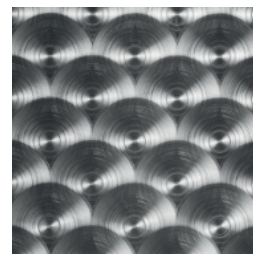
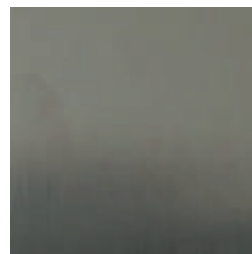
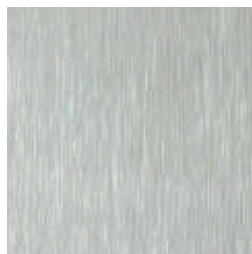
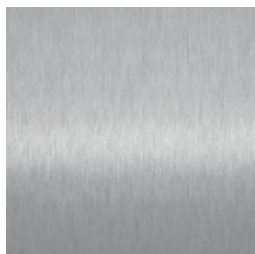
**Assorted spare
parts**

The warranty will be accompanied by an ordinary maintenance contract for the entire period. During the warranty period (10 years) Santioli Srl repairs and replaces all defective parts. The customer will only be responsible for normal wear and tear on the parts.





SANTIOLI SRL



SALES

sales@santioli.com

+39 0577 892072 | +39 353 332 3813

SANTIOLI SRL
P.IVA 01523250528

Italy - Tuscany - Siena
Abbadia San Salvatore, 53021
Via Cassia Km 153/500

info@santioli.com
www.santioli.com