

In-Stock Punches & Dies



#20 & #40 Rounds

1/8	11/16
5/32	23/32
3/16	3/4
13/64	25/32
7/32	13/16
1/4	27/32
17/64	7/8
9/32	29/32
5/16	15/16
11/32	31/32
3/8	1
13/32	1-1/32
7/16	1-1/16
15/32	1-3/32
1/2	1-1/8
17/32	1-5/32
9/16	1-3/16
19/32	1-7/32
5/8	1-1/4
21/32	

Round Metric

5 mm	19 mm
6 mm	20 mm
7 mm	21 mm
8 mm	22 mm
9 mm	23 mm
10 mm	24 mm
11 mm	25 mm
12 mm	26 mm
13 mm	27 mm
14 mm	28 mm
15 mm	29 mm
16 mm	30 mm
17 mm	31 mm
18 mm	32 mm

#45 Round Punches

1-9/32
1-5/16
1-11/32
1-3/8
1-13/32
1-7/16
1-15/32
1-1/2
1-17/32
1-9/16

Split Ring Round

1-5/8
1-3/4
2
2-1/4
2-1/2
2-3/4
3

Round Offset Dies

9/32
5/16
11/32
3/8
13/32
7/16
15/32
1/2
17/32
9/16
19/32

#49 Round Punches

1-5/8	1-7/8
1-11/16	1-15/16
1-3/4	2
1-13/16	

Ovals

1/4 x 1/2	13/16 x 1
9/32 x 1/2	7/8 x 1
1/4 x 3/4	15/16 x 1
9/32 x 3/4	1/4 x 1-1/4
5/16 x 3/4	9/32 x 1-1/4
11/32 x 3/4	5/16 x 1-1/4
3/8 x 3/4	3/8 x 1-1/4
13/32 x 3/4	13/32 x 1-1/4
7/16 x 3/4	9/32 x 1-1/4
15/32 x 3/4	5/16 x 1-1/4
1/2 x 3/4	11/32 x 1-1/4
17/32 x 3/4	3/8 x 1-1/4
9/16 x 3/4	13/32 x 1-1/4
19/32 x 3/4	7/16 x 1-1/4
5/8 x 3/4	15/32 x 1-1/4
1/4 x 1	1/2 x 1-1/4
9/32 x 1	17/32 x 1-1/4
5/16 x 1	9/16 x 1-1/4
11/32 x 1	19/32 x 1-1/4
3/8 x 1	5/8 x 1-1/4
13/32 x 1	21/32 x 1-1/4
7/16 x 1	11/16 x 1-1/4
15/32 x 1	23/32 x 1-1/4
1/2 x 1	3/4 x 1-1/4
17/32 x 1	25/32 x 1-1/4
9/16 x 1	13/16 x 1-1/4
19/32 x 1	7/8 x 1-1/4
5/8 x 1	15/16 x 1-1/4
21/32 x 1	7/16 x 1-1/2
11/16 x 1	9/16 x 1-1/2
23/32 x 1	11/16 x 1-1/2
3/4 x 1	13/16 x 1-1/2
25/32 x 1	15/16 x 1-1/2

Squares

1/4
9/32
5/16
11/32
3/8
13/32
7/16
15/32
1/2
17/32
9/16
19/32
5/8
21/32
23/32
3/4
25/32
13/16
27/32
7/8
29/32
1
1-1/32

Hexagon

1/2
17/32
11/16
3/4

Corner Turning

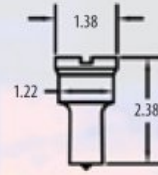
1/2
3/4

Trimming & Cut Off

3/4
1

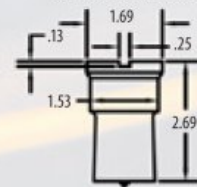
#40 Punch

1/8" Thru 1-1/4"
3 mm Thru 31 mm



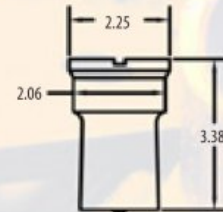
#45 Punch

1-9/32" Thru 1-9/16"
32 mm Thru 36 mm



#49 Punch

(12012, DO 120, DO 135, DO 150 Machines Only)
1-5/8" Thru 2"
37 mm Thru 52 mm



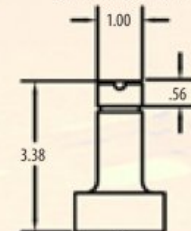
Split Ring Punch

Thru 4"



#20 Punch

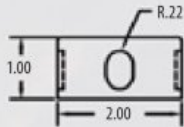
1/8" Thru 2-1/4"
3 mm Thru 57 mm



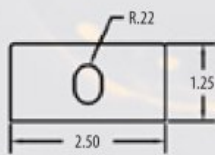


Special Punches & Dies

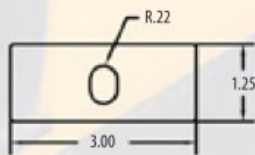
#82 Die



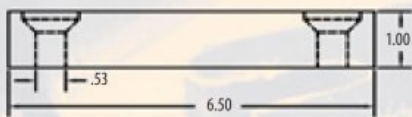
#86 Die



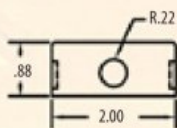
3" Die



6 x 6 Die



#20 Die



CUSTOM TOOLING

Various tooling options and hundreds of punches and dies are available for every model. In addition, we build custom tooling for your special applications.

Sample Custom Tooling Built for Special Applications

