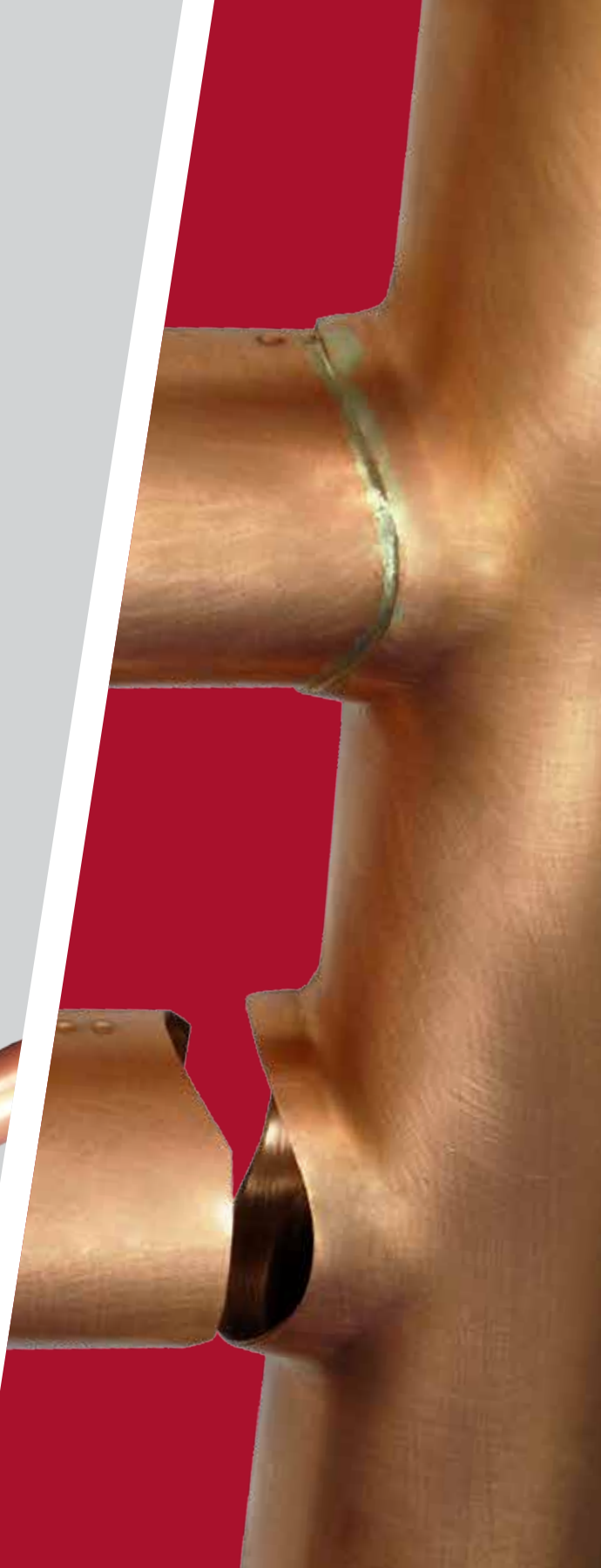


# T-DRILL

PRODUCTIVITY AS A PRODUCT.



## COLLARING MACHINE

Heavy Duty Tee Forming Machine

**T-65**  

---

**T-65B**

# T-65 & T-65B

## HEAVY DUTY TEE FORMING MACHINE

While giving you comparable quality to a commercial tee fitting, the **T-65** and **T-65B** also increase your profit by eliminating two brazed joints and the fitting cost.

### T-65 Copper

The heavy duty **T-DRILL T-65** is a portable, easy-to-use and low-noise tee forming machine for professionals. It is an ideal solution for making tee joints into a main run tube.

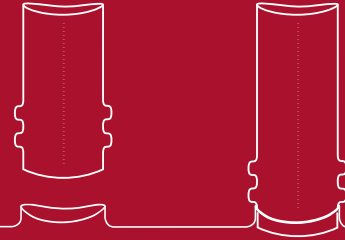


### T-65B Copper

The heavy duty **T-DRILL T-65B** is the cordless 28V Lithium-Ion version of the **T-65** tee forming machine.



# THE T-DRILL PROCESS



## T-65 ACCESSORIES

### ND-54

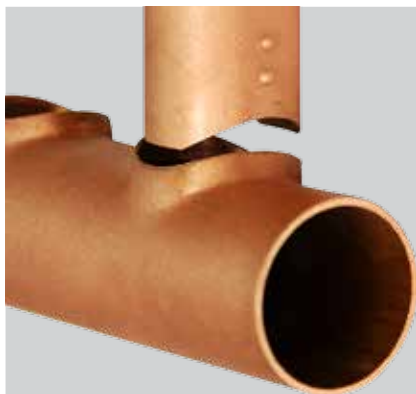
The T-DRILL ND-54 is an easy to use tube notching and dimpling tool. It notches the branch tube end to match the inner curve of the run tube. Simultaneously it places two dimples to act as a depth stop and point of inspection.

The result is a foolproof joint with optimized flow characteristics. The ND-54 is commonly used with the T-DRILL T-35 and T-65 tee-forming machines.



### ND-54 Operating range

|       |    |         |         |     |       |       |       |       |
|-------|----|---------|---------|-----|-------|-------|-------|-------|
| mm    | 12 | 14 - 16 | 18 - 19 | 22  | 28    | 35    | 42    | 54    |
| IN/OD | ½  | 5/8     | ¾       | 7/8 | 1 1/8 | 1 3/8 | 1 5/8 | 2 1/8 |



## T-65 Capacity

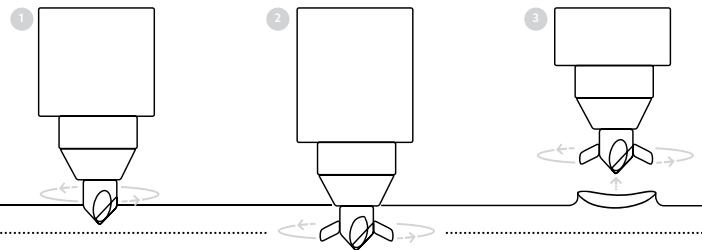
| Run tube outside diameter | Branch tube outside diameter      |            |            |            |            |            |              |              |              |              |
|---------------------------|-----------------------------------|------------|------------|------------|------------|------------|--------------|--------------|--------------|--------------|
|                           | 8<br>5/16"                        | 10<br>3/8" | 12<br>1/2" | 15<br>5/8" | 18<br>3/4" | 22<br>7/8" | 28<br>1 1/8" | 35<br>1 3/8" | 42<br>1 5/8" | 54<br>2 1/8" |
| 15<br>5/8"                | 0,8                               | 1,0        | 1,2        | 1,2        | -          | -          | -            | -            | -            | -            |
| 18<br>3/4"                | 0,8                               | 1,0        | 1,2        | 1,5        | 1,2        | -          | -            | -            | -            | -            |
| 22<br>7/8"                | 0,8                               | 1,0        | 1,2        | 1,5        | 1,5        | 1,5        | -            | -            | -            | -            |
| 28<br>1 1/8"              | 0,8                               | 1,0        | 1,2        | 1,5        | 1,5        | 1,5        | 1,5          | -            | -            | -            |
| 35<br>1 3/8"              | 0,8                               | 1,0        | 1,2        | 1,5        | 1,5        | 1,5        | 1,5          | 1,5          | -            | -            |
| 42<br>1 5/8"              | 0,8                               | 1,0        | 1,2        | 1,5        | 1,5        | 1,5        | 1,5          | 2,0          | 2,0          | -            |
| 54<br>2 1/8"              | 0,8                               | 1,0        | 1,2        | 1,5        | 1,5        | 1,5        | 1,5          | 2,0          | 2,0          | 2,0          |
| 64<br>2 1/2"              | 0,8                               | 1,0        | 1,2        | 1,5        | 1,5        | 1,5        | 1,5          | 2,5          | 2,5          | 2,5          |
| 76,1<br>3"                | 0,8                               | 1,0        | 1,2        | 1,5        | 1,5        | 1,5        | 1,5          | 2,5          | 2,5          | 2,5          |
| 88,9<br>3 1/2"            | 0,8                               | 1,0        | 1,2        | 1,5        | 1,5        | 1,5        | 1,5          | 2,5          | 2,5          | 2,5          |
| 108<br>4"                 | 0,8                               | 1,0        | 1,2        | 1,5        | 1,5        | 1,5        | 1,5          | 2,5          | 2,5          | 2,5          |
| 168,3                     | With optional retrofit kit (T-65) |            |            |            |            |            |              |              |              |              |

Max. wall thickness of copper pipe (mm)

The heavy duty **T-DRILL T-65** is suitable for K, L and M-type copper tubes.

## THE T-DRILL PROCESS

1. Drilling of the pilot hole 2. Extension of the forming pins 3. Collar is finished



## DO IT WITH T-DRILL

Cut costs – Improve quality – Increase profit

- No T-fittings
- No costly inventories
- No tube cutting

- Only one brazed joint
- Minimized inspection cost
- Tee ratio variation flexibility

- Smaller risk of leakage or call-backs
- Optimized flow-characteristics

### MANUFACTURER:

# T-DRILL

### T-DRILL OY

Ampujantie 32  
66400 Laihia, FINLAND  
Tel. +358 6 475 3333  
Telefax +358 6 475 3300  
sales@t-drill.fi, www.t-drill.fi

### REPRESENTED BY:

### T-DRILL Industries Inc.

1740 Corporate Drive,  
Suite #820, Norcross,  
Georgia 30093 USA  
Tel. +1-770-925-0520,  
Toll-free +1-800-554-2730  
Telefax +1-770-925-3912  
sales@t-drill.com  
www.t-drill.com