

## Machining unit for modular assembly



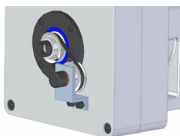
ø 16 mm    M 12    N/A

### CG.16

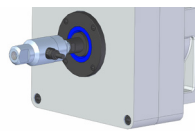
Maximum drilling capacity in steel (700 N/mm <sup>2</sup> )	Ø 16 mm
Maximum tapping capacity in steel (700 N/mm <sup>2</sup> )	M12
Revolutions range (50 Hz)	210—9000 r.p.m.
Maximum turning torque	31 Nm.
Spindle Cone	ISO 30 DIN 2080
Weight (without motor)	~40 Kg.
Available motors (50 Hz)	750 r.p.m. / 0,55 Kw. 1500 r.p.m. / 1,5 Kw 3000 r.p.m. / 2,2 Kw.

[ THERE ARE OTHER POSSIBLE COMBINATIONS, PLEASE CONSULT ]

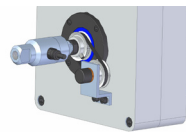
### OPTIONAL EQUIPMENT



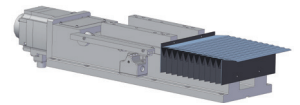
**RG:** Encoder for rigid tapping and tool positioning.



**RU:** Rotary joint for tool internal cooling.



**RGU:** Rotary joint + encoder.



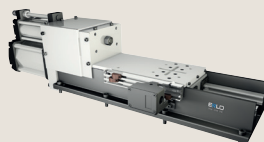
Protection bellows for slides guides.

\*\* Pneumatic clamping (AN) and hydraulic clamping (AH), **NOT AVAILABLE.**

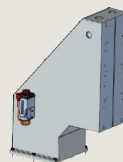
### COMBINABLE ELEMENTS



CA-16 Slide



CAN-16 Slide



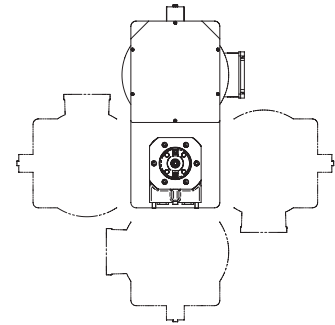
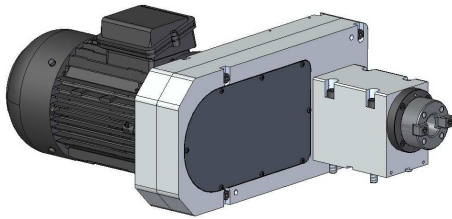
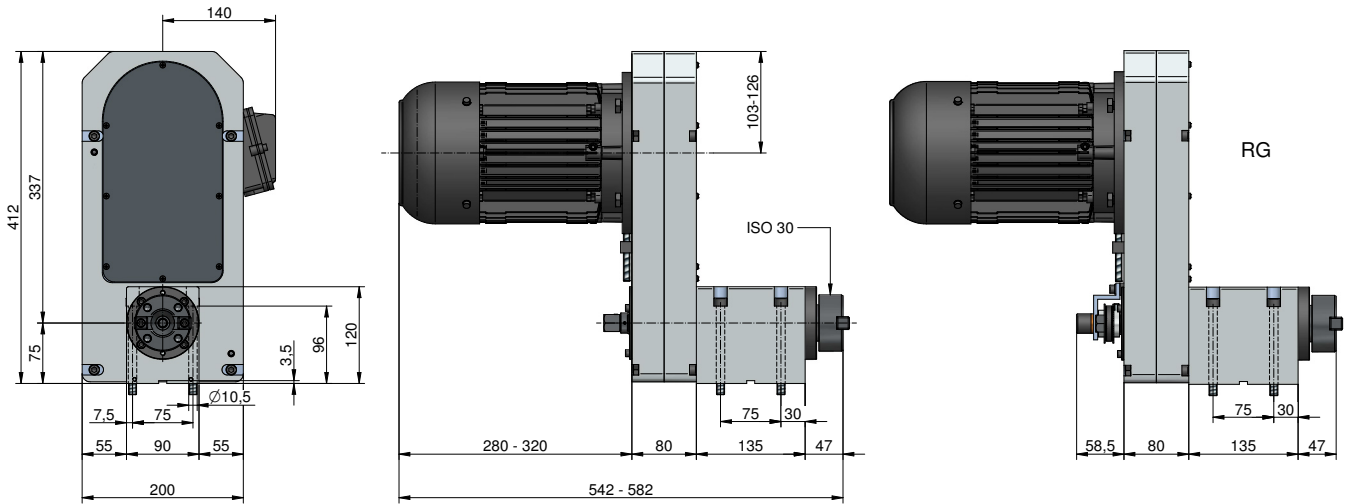
SB Column



VH Multispindle head

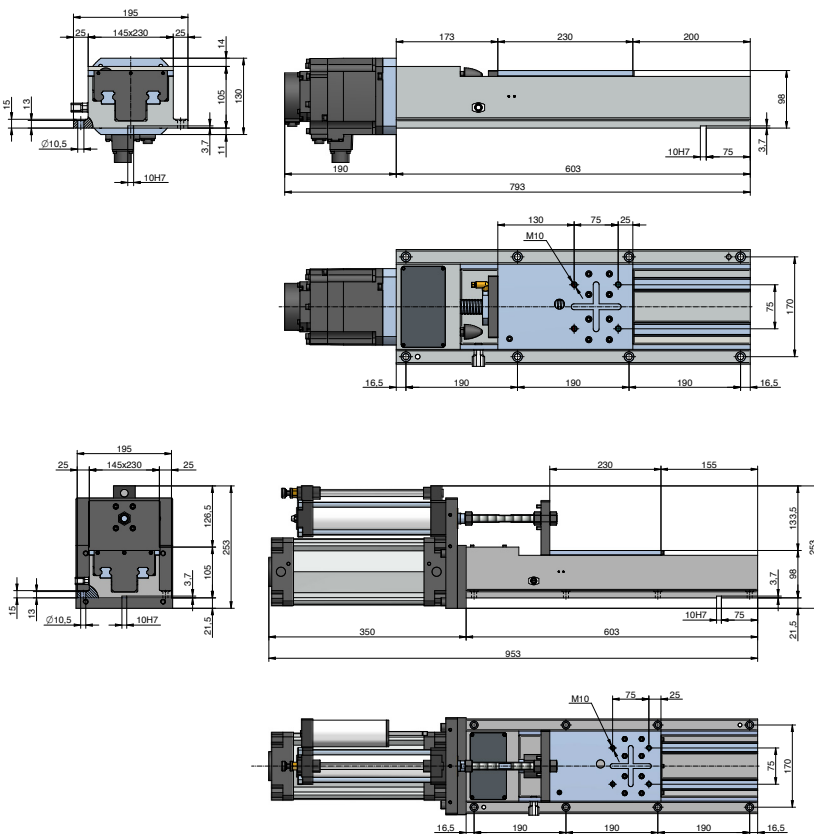


Tool holder



The pulley box as well as the connectors box of the motor can be assembled in any of these positions.

## RECOMMENDED ACCESSORY



### CA.16

Stroke	200 mm
Ball spindle	Ø25x5
Thrust force (kN)	5,4
Weight with motor	40 Kg.
Weight without servomotor	50 Kg.

### CAN.16

Stroke	100 mm
Max. Thrust to 6 bar (kN)	4,4
Weight	65 Kg.

\* Measures can vary without previous notice. Ask for the updated drawing in every case.