

Universal grinding head U-1100



Applications

The U-1100 is amazingly versatile: Grinding of inner and outer surfaces on pipes and vessels. Grinding of inner and outer surfaces on dished ends and cones.

Internal and external grinding of circumferential and longitudinal weld seams on pipes and vessels or on flat plates and sections. Internal and external precision grinding of weld seams on pipes, vessels and dished ends or on flat sheets and sections.

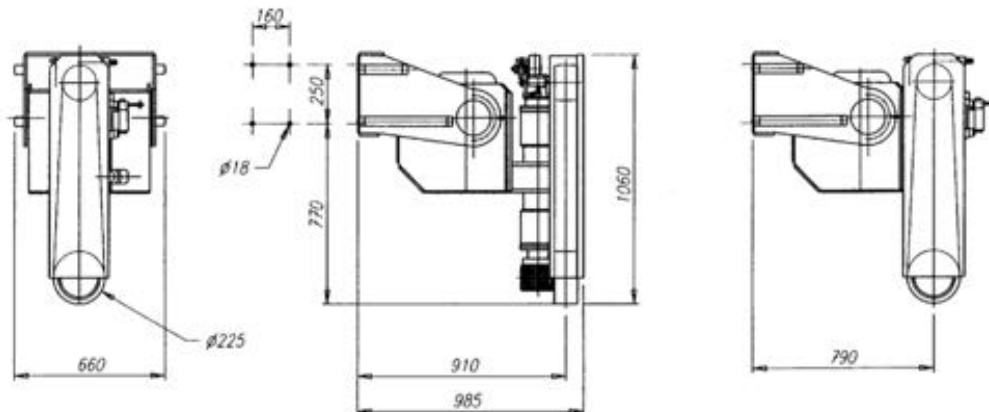
Technology

This versatility is due in particular to the newly developed power transmission system. The motor is not longer housed in the floating part but in the fixed solid support of the grinding head. This means that the floating part has an extremely low mass and is therefore optimally adapted to the workpiece surface. It is precisely this characteristic which is particularly advantageous in the grinding of uneven surfaces. Since the U-1100 operates with a pneumatic cushioning system, it can be used in practically any direction. With the turning device incorporated between the swivel fork and the boom, the grinding head can be rotated continuously through three axes, enabling the optimal grinding positions to be set.

Performance

The U-1100 can be equipped with grinding belts, polishing rings, wire brushes or Scotch-Bride. The use of the latest generation of grinding belts permits removal of over 700 gram of mild steel or about 300 gram of stainless steel per minute.

By using grains of increasing fineness, practically any surface finish desired can be effortlessly obtained.

**Technical Data**

Free play of the grinding head	+/- 70 mm
Grinding head pressure adjustable from	0 bis 1'200 N
Smallest grindable inner vessel diameter	ϕ 1'200 mm
Smallest grindable dished end diameter	ϕ 1'200 mm
Fork swivel axis	+/- 90°
Head swivel axis vertical	-10° bis +96°
Power	11 kW

Measurements

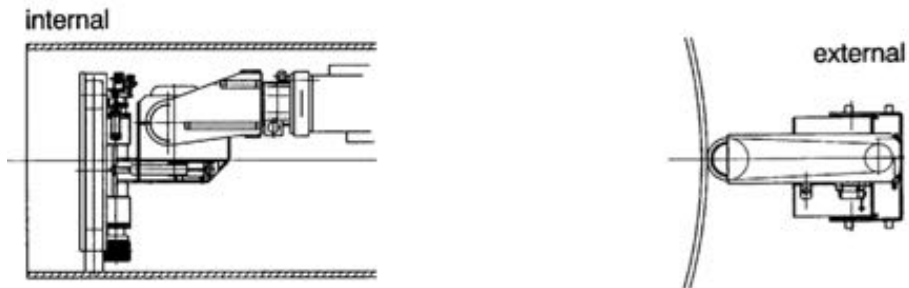
Height	1'060 mm
Width (with Fork)	660 mm
Length	985 mm
Contact wheel	ϕ 225 mm x 50 / 75 / 100 mm
Grinding belt	50 - 100 x 2'250 mm

Weight

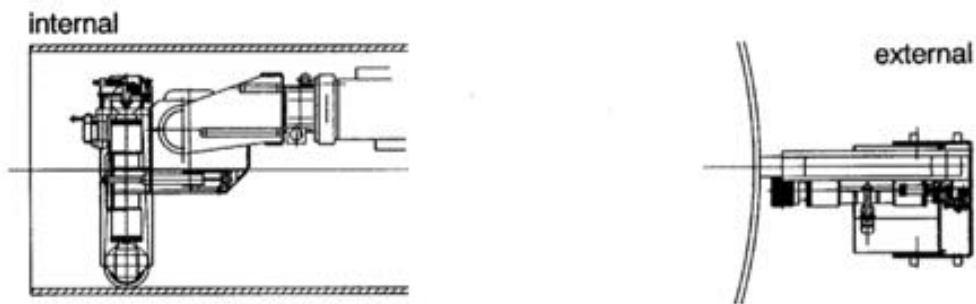
Grinding head total (incl. Swivel fork 90 kg, floating part 120 kg)	380 kg
Turning device	90 kg

Applications

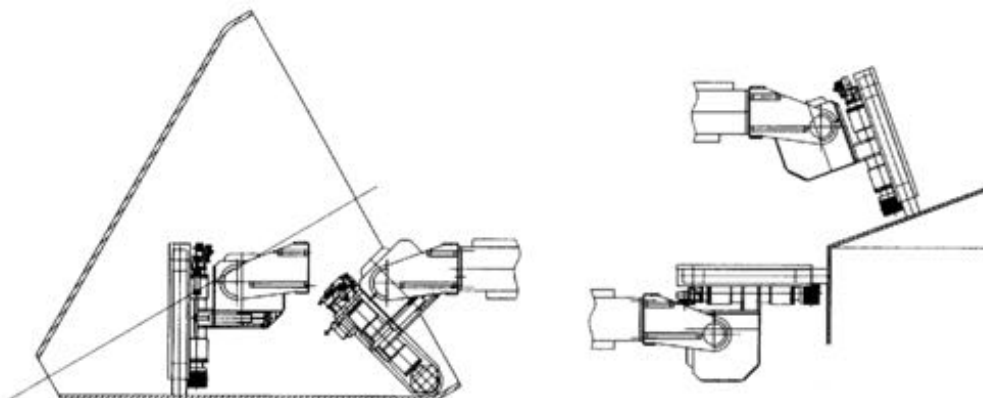
Grinding of cylindrical surfaces and circumferential weld seams



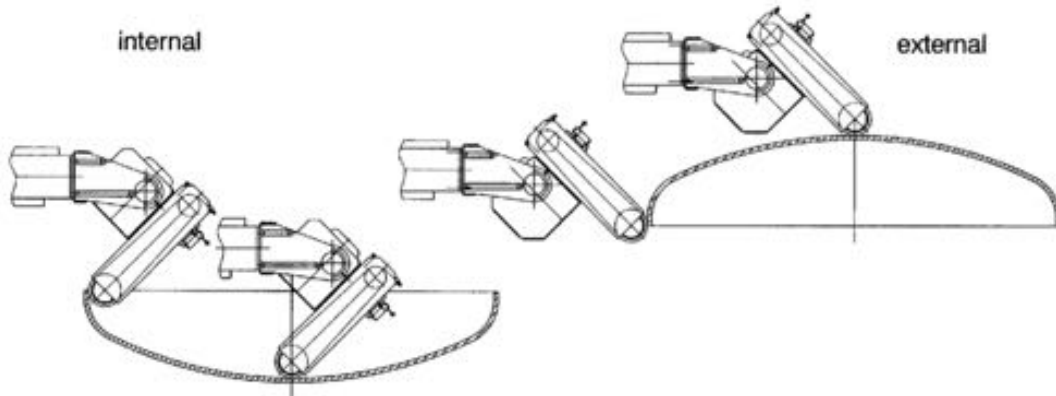
Grinding of longitudinal weld seams



Grinding of cones



Grinding of dished ends



Edge preparation

