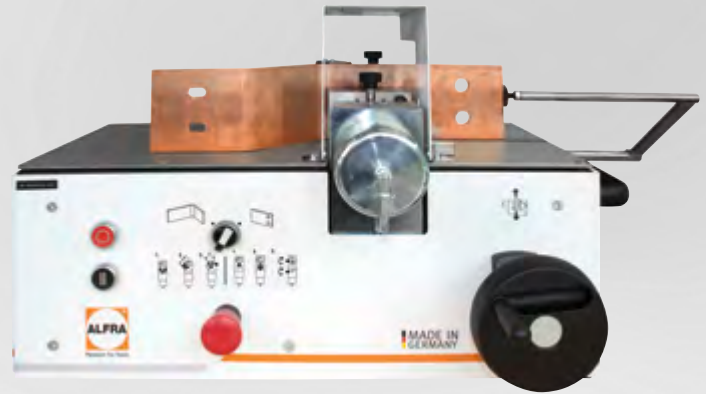


ALFRA BS 120 CU-BUSBAR BENDING AND HOLE PUNCHING DEVICE

Bend, punch, ready, go!

With the Alfra BS 120 CU busbar bending and punching device in the set variant, enclosure builders can get started immediately, because the bending-die, electric angle reader, foot switch and hydraulic pump are included in the scope of delivery (punching tools are available as an option depending on the required dimensions).

This means: Precise bending and punching is done by simple conversion in just a few steps. Even in the set version, you benefit from improvements to protect the machine.



ALFRA BS 120-Set

Prod.-No.

03912

- Prod.-No. 03200SET.NG
ALFRA BS 120 CU-busbar bending and hole punching device
- Prod.-No. 03857
Electro-hydraulic pump **AHP M1**
- Prod.-No. 03862.NG
Foot switch with safety function

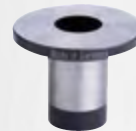
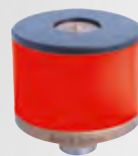


Prod.-No. 03912

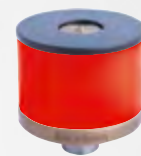
Accessories

Punches and dies

Punch Ø in mm	Metric Screw connection	Max. Material thickness in mm	Prod.-No.
6.6	6.0	5.0	03204
9.0	8.0	6.0	03205
9.5	8.0	6.0	03206
11.0	10.0	12.0	03207
11.5	10.0	12.0	03208
13.5	12.0	12.0	03209
14.0	12.0	12.0	03210
17.5	16.0	12.0	03211
18.0	16.0	12.0	03212
21.0	20.0	12.0	03213
21.5	20.0	12.0	03214



Round punches and dies



oblong hole punches and dies

Die Ø Max. in mm	Material thickness in mm	Prod.-No.
6.6	5.0	03230
9.0	6.0	03231
9.5	6.0	03232
11.0	12.0	03233
11.5	12.0	03234
13.5	12.0	03235
14.0	12.0	03236
17.5	12.0	03237
18.0	12.0	03238
21.0	12.0	03239
21.5	12.0	03240

Punches and dies for oblong holes up to max. L x W = 21 x 18 mm
upon request

Prod.-No.

03241