

## CKLASER

### BRAND INTRODUCTION



Total capacity>10000 sets

R&D >10 years

exported countries >30

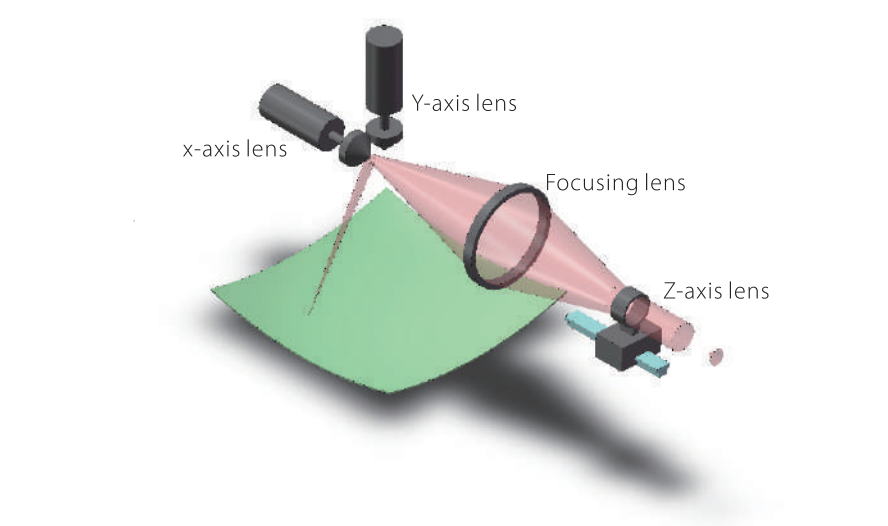
patent identification>50 items

## Certificate



## Core Technology

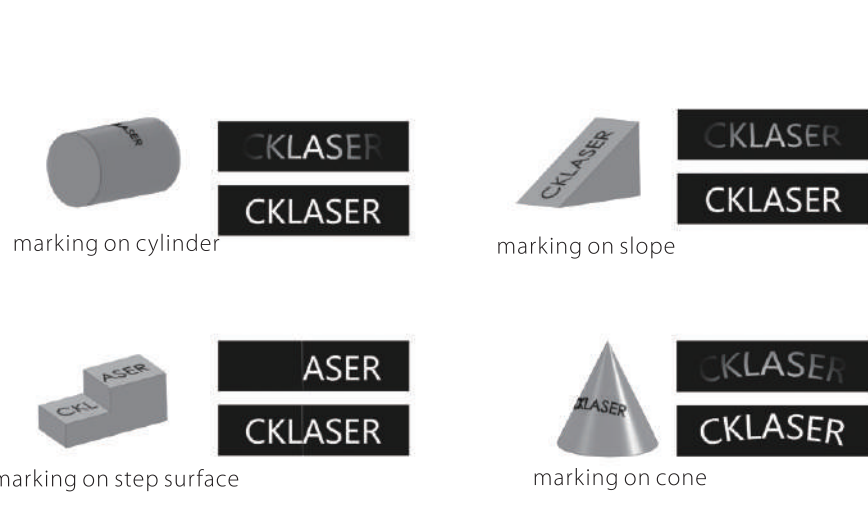
3 axis dynamic focusing system



Adopting the front focusing optical design and fit with the galvanometer and software, we launch the 3-axis dynamic focusing system. Laser source output the light spot focus through dynamic focus lens, and it will according to the distance between every point on workpiece surface to the lens, to change the focal length by software algorithm, so that it can make sure all of the spot will focus on the workpiece surface. The fastest speed of this optical design's machine up to 15000 mm/s, it increase almost 40--50% to the rear one.

## Core Technology

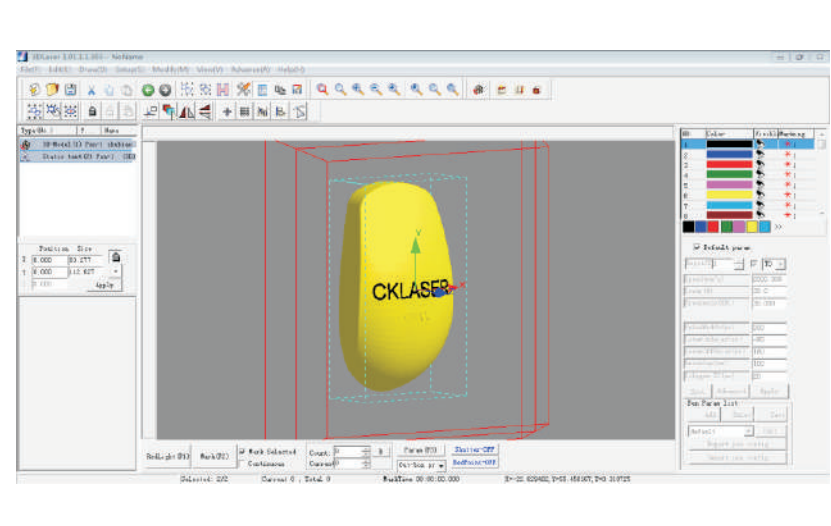
Precise 3D marking



3D marking resolve the difficulty that marking design deformed and twisted by traditional 2D laser marking on the surface of step, slope, cylinder, cone, etc.

## Core Technology

Professional software



3DLASER software with humanized operation interface, easy and simple operation, which make working in high-efficiency.

## CKLASER



MINI 3D Laser Marking Machine

## Features

- **Auto focus**  
one-touch to find out the focus distance easily.
- **Auto lifting**  
button controls automatic lifting and adjusts the marking height.
- **Integrated design**  
easy to move, can be placed on desk or any flat places.
- **Easy maintenance**  
installation is reasonable and simple which make parts easy to be replaced in 10 minutes

## Product Parameter

Model	CK-MINI
Average power	20W/30W/50W/60W/120W
Power Consumption	500W
Marking area	110mm×110mm/170mm×170mm
Cooling system	Air
Environment	Ambient temperature 15-35°C/humidity 30-80%
Body size	750mm×530mm×430mm



CK-FB Series

## Features

- Suitable for a variety of metals and non-metallic materials processing, the effect is permanent wear-resisting.
- Non-contact processing, it will not damage the product, no tool wear, it marks in a good quality.
- High processing efficiency. Controlled by computer, it is easy to achieve the automation.
- High electro-optical conversion efficiency. The gross power is less than 800W, which is a tenth of lamp pumped solid laser marking machine, so it can greatly save the energy.
- No need any maintenance, long using life, small volume, suitable for bad working environment.

## Product Parameter

Model	CK-FB
Average power	20W/30W/50W/60W/120W
Power Consumption	800W
Marking area	110mm×110mm/170mm×170mm/200mm×200mm
Cooling system	Air
Marking Mode	XYZ 3-Axis Dynamic Focus
Environment	Ambient temperature 15-35°C/humidity 30-80%



3D Fiber Laser Marking Machine

## Features

- **High efficiency**  
Adopt the imported water-cooling high speed digital scanning system, with CK's 3D software and control system, a 4.7-inch phone frame can be finished within 13s.
- **Precise effect**  
The unique folder cavity structure with better light beam quality, smaller light spot diameter and the processing effect of product is more precise, smooth, and high uniformity.
- **Special wavelength optic lens**  
The smaller reflectivity, the less laser loss, the bigger output power.
- **Strong adaptability**  
Customized imported laser source with the characteristics of strong power, high peak power, big frequency, so that it can adjust various parts and colors mobile frame's process.

## Product Parameter

Model	CK-LEG
Power Consumption	4500W
Z axis precision	±0.02mm
B axis precision	±0.02mm
Marking area	250mm×250mm
Cooling system	Constant Temperature Cooling Unit
Marking Mode	XYZ 3-Axis Dynamic Focus
Environment	Temperature15°C-30°C ; humidity 30-80% ;

## CKLASER



Co2 250W & 350W Laser Marking Machine

## Features

- **Laser source is high quality**  
Imported high power laser source's output is more stable, its light spot is more exquisite, and the cutting power is stronger.
- **Digital scanning galvo**  
Using the digital scanning technology, anti-interference and temperature drift compensation, this machine have a larger place to engrave with elaborate carving quality and high speed.
- **Mold making**  
Outer casing is made by high quality aluminum alloy after heat treatment; it is well sealed and resistant to corrosion, so that it can protect the main devices and light path in stable.
- **Professional software**  
Professional making system is easy to learn and operate. The software has integration data optimization function; it is time-saving and high work efficiency.

## Product Parameter

Model	CK-LEG250/350
Average power	250W/350W
Power Consumption	8000W
Marking area	400mm×400mm - 800mm×800mm
Cooling system	Constant Temperature Cooling Unit
Marking Mode	XYZ 3-Axis Dynamic Focus
Environment	Temperature15°C-30°C humidity 30-80%

## CKLASER



Laser marking machine with conveyor system

## Features

- **Humanize control panel**  
Common operations function integrated in the control panel, concise and easy to use.
- **Electric overhead door**  
This machine conforms to the European safety standard. Equipped with a safety switch and the shutter, the operation becomes more safe and reliable.
- **Electric 3-Axis focusing**  
One-Click can change the focus of laser beam height. It is flexible to adjust angle and choose the mark area. It equipped with three power ranges and three optional mark areas.
- **Flexible optional configuration**  
According to the demand for matching the corresponding scan head, laser source and adoption workbench, it will make work handier.

## Product Parameter

Average power	180W/250W/350W
Laser beam quality	1.2×M2
Marking area	800mm×800mm(one time)
positioning accuracy	0.003mm
repetition accuracy	0.003mm
power supply	100kVA
Cooling system	Constant Temperature Cooling Unit
power supply voltage	AC220V±2% , 50Hz

## CKLASER



Large Range Laser Marking Machine on LGP

## Features

- **High luminous efficiency**  
Uniform fiber, network lines are generated by professional optical software. Glove's reasonable arrangement (edge thin middle dense) to maximize the brightness uniformity.
- **Long service life**  
Durable, not yellowing, long service life, normally can be used beyond 8 years indoors.
- **Environmental adaptation**  
It will not be affected by moisture, while the printed one will fade when it met water.
- **Process simple and flexible**  
The size of black light can be changed according to the customer request. Simple making is fast and economical.

## Product Parameter

Model	CK-LGP
Average power	250W/350W
Power Consumption	8000W
Marking area	800mm × 800mm; 1200mm × 1200mm
Cooling system	Constant Temperature Cooling Unit
Marking speed	2200dots/s
Spot size ( R )	0.2mm - 1.2mm
Environment	Temperature15°C-30°C ; humidity 30-80% ;

## CKLASER

## Features

- **Advanced 3-Axis technology**  
By using the least 3-Axis System, it can adjust the laser focal length timely and automatically, which is keep the light spot uniform in different size of goods surface. And that is the 3D marking on the hook face.
- **Marking on the rugged surface**  
By using the CK Control System, it can mark the goods on a rugged surface in once time.
- **Human Engineering design**  
The machine adopts the model of focusing above, operator can be more comfortable and relaxed during use it.
- **Red-light Pointer**  
Dynamical red-light can show you the marking location, so that you can mark in a high efficiency.

## Product Parameter

Model	CK-LEG100/180
Average power	100W/180W
Power Consumption	4500W
Marking area	300mm×300mm - 600mm×600mm
Cooling system	Constant Temperature Cooling Unit
Marking Mode	XYZ 3-Axis Dynamic Focus
Environment	Temperature15°C-30°C humidity 30-80%

## CKLASER



360° rotating marking system

## Features

- Standard import CO2 metal laser tube, fast processing speed with high quality.
- Designed for textile fabrics, it can continuous cutting, engraving and the width of working area is 1800mm.
- Compared with traditional dyeing processing technology, laser heat processing has the advantages of no pollution, never fades, no need pattern making, easy to modify, and the pattern is clear as well as strong stereo feeling.
- Adoption of world most advanced galvo flying engraving technology can perform fabric engraving with high speed without splicing. The pattern engraved will be more natural and it is specially for engraving large format fabric.
- Operating system supports multiple data transmission mode and it can run in off line and on line modes.

## Product Parameter

Model	CK-AF-1600
Average power	250W/350W
Power Consumption	8500W
Working Range	1600mm× limitless ( optional )
Cooling system	Constant Temperature Cooling Unit
Environment	Temperature15°C-30°C ; humidity 30-80% ;



co2 roll to roll system

## CKLASER

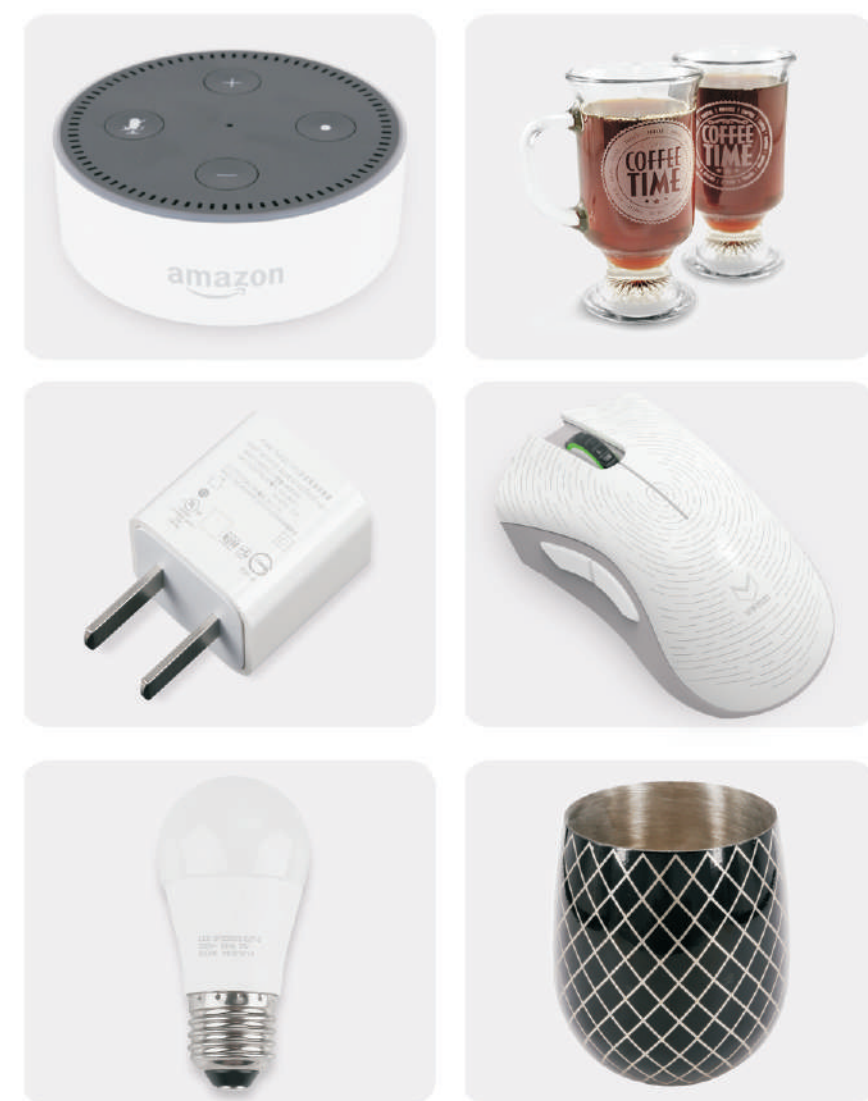
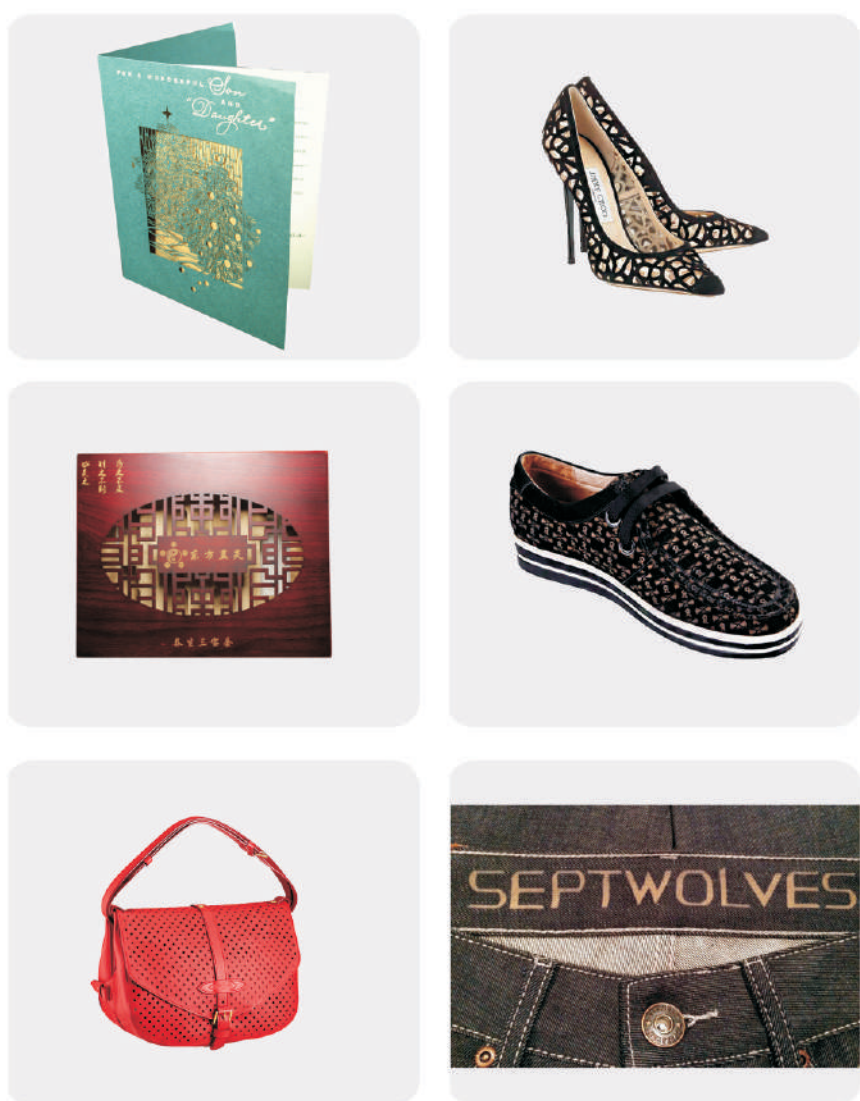
## Features

- **High efficiency**  
It can make the carving and hollow. One single machine processes two parts in the same time intelligently, so, one person can control several machines, it is labor saving.
- **High stability**  
The use of reliable shaft and high precision sensors to ensure the smooth surface and also rewinding the edge is neat. It can keep the system stable and almost all the production is perfect.
- **High reliability**  
The use of inflatable roller and production of high strength alloy steel roll with cantilever shaft, bearing 50KG receiving coil.
- **Humanized system**  
LC control, man-machine dialogue, convenient, simple operation, strong anti-interference.

## Product Parameter

Model	CK-LEG-CL0808
Average power	180W/250W/350W
Power Consumption	8500W
Marking area	800mm×800mm(one time)
Cooling system	Constant Temperature Cooling Unit
Environment	Temperature15°C-30°C ; humidity 30-80% ;

## Samples show



## CKLASER

Add : 110263 Central Yuhao Road, Yuhao Town, Huadu Dist, Guangzh  
TEL : 400-9022-088  
E-mail : cklsae@163.com  
Website : www.fiberlasermachine.com